

Instructions for fitting New Stays (Hastings Type)

Refer to Drawing below

Remove stay, place broken ends together and hammer up to obtain exact length.

Measure the opening of the stay socket and get the new stay out to these dimensions, the length being obtained from the old stay.

Measure off from the old stay the length "A" shown in fig. 1 (the bottom of the stay) and taper this portion on three sides only.

Hollow out bottom of stay to fit half round the gudgeon as shown at "B" in fig. 1. This hollow must be cut at right angles to the untapered side of the stay.

Fit stay in the socket with the untapered side of the stay to the side of the socket containing the small holes, i.e., the nut side of the two stay bolts.

Make sure that the stay is bottoming on to the gudgeon. Remove stay and taper equally on all four sides from about two inches above the stay socket to the top, fig. 1, "E", and fit dingler box as on original stay.

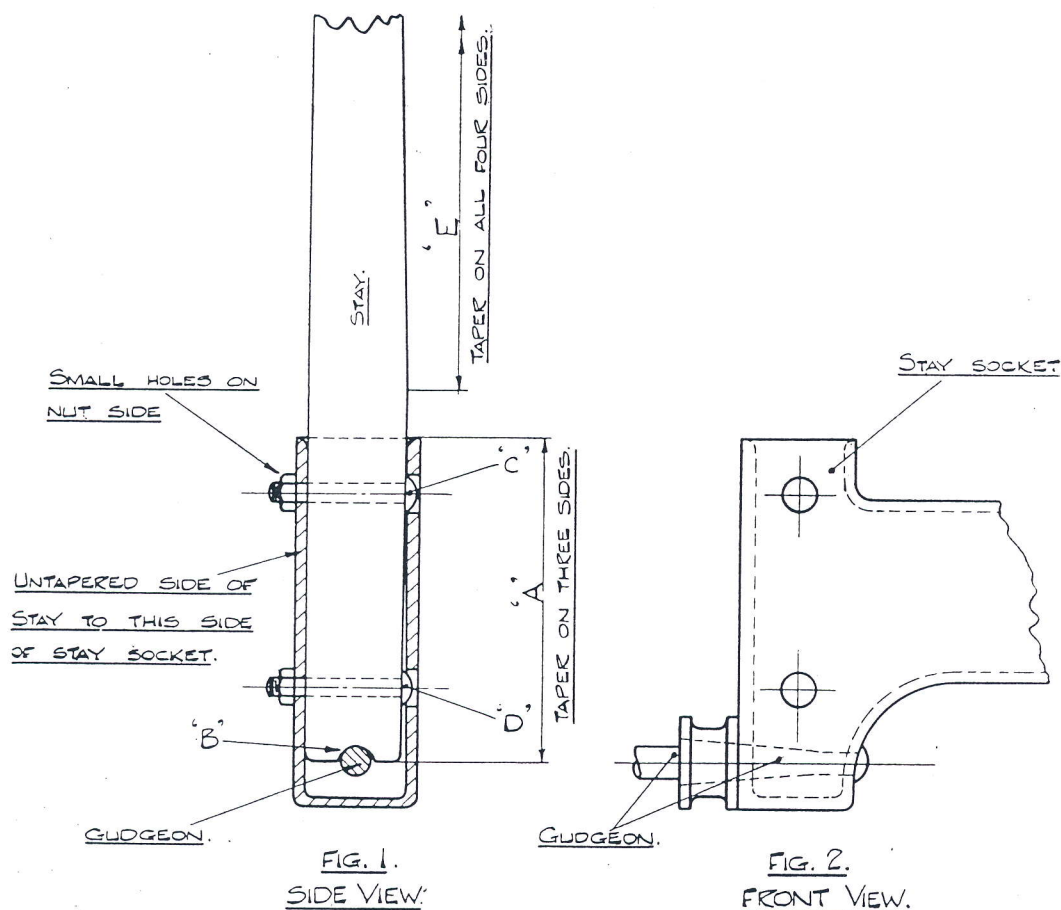
After fitting dingler box, replace stay in socket, bore top hole only and fit top bolt "C".

The bell should now be hung up by an assistant and the stay and dingler observed to see that they are free on the slide.

After it is ascertained that no binding takes place anywhere, the bottom hole may be bored in the stay and bolt "D" fitted.

★ ★ ★ ★ ★

PLEASE NOTE:— All replacement stays supplied from our Works are already planed to the approximate size and tapered. The untapered side is plainly marked to enable the stay to be fitted correctly. The placing of the untapered face of the stay to the wrong side of the socket will result in the dingler binding on the slide.



JOHN TAYLOR & CO.
Bellfounders,
LOUGHBOROUGH