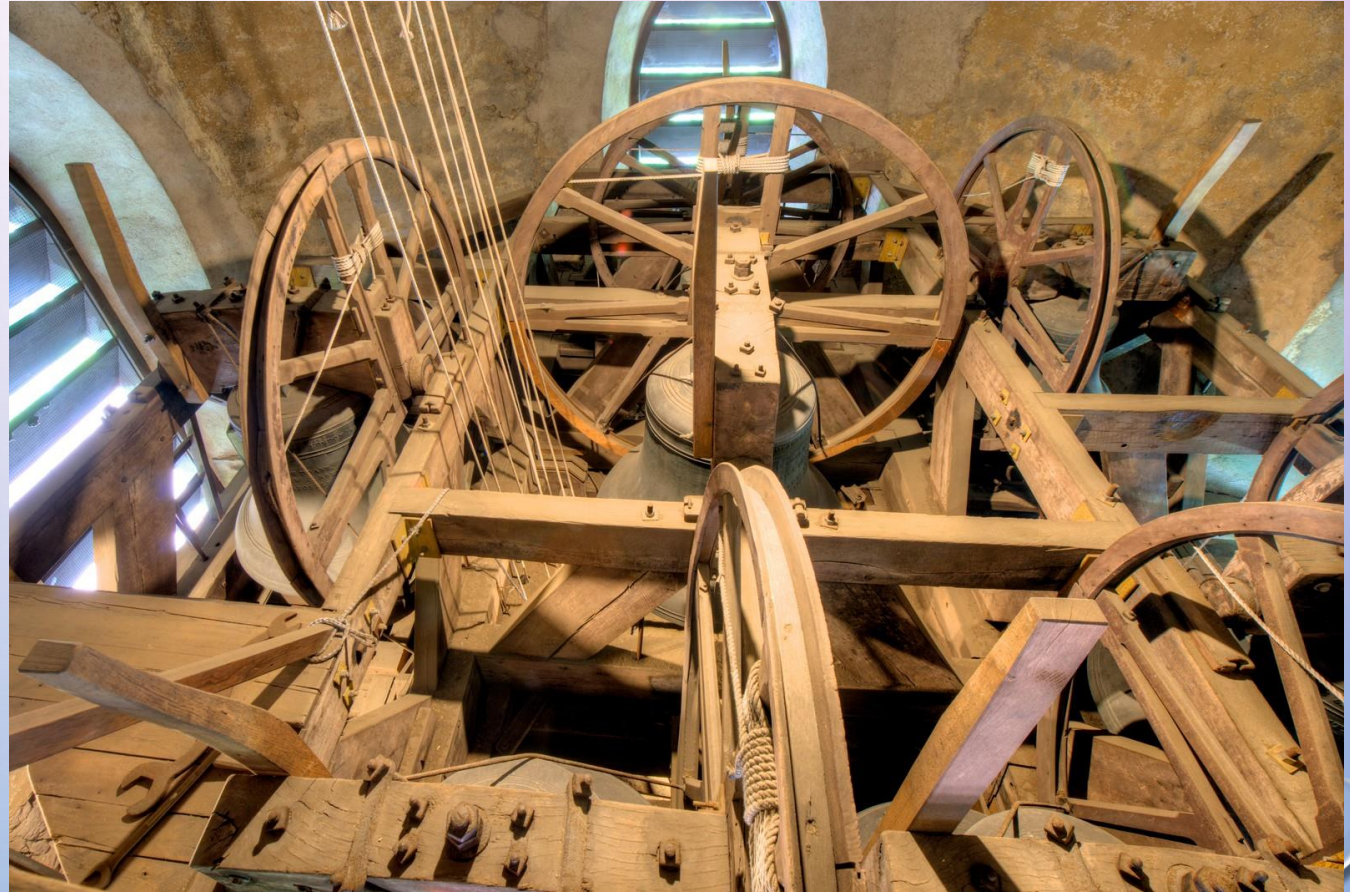
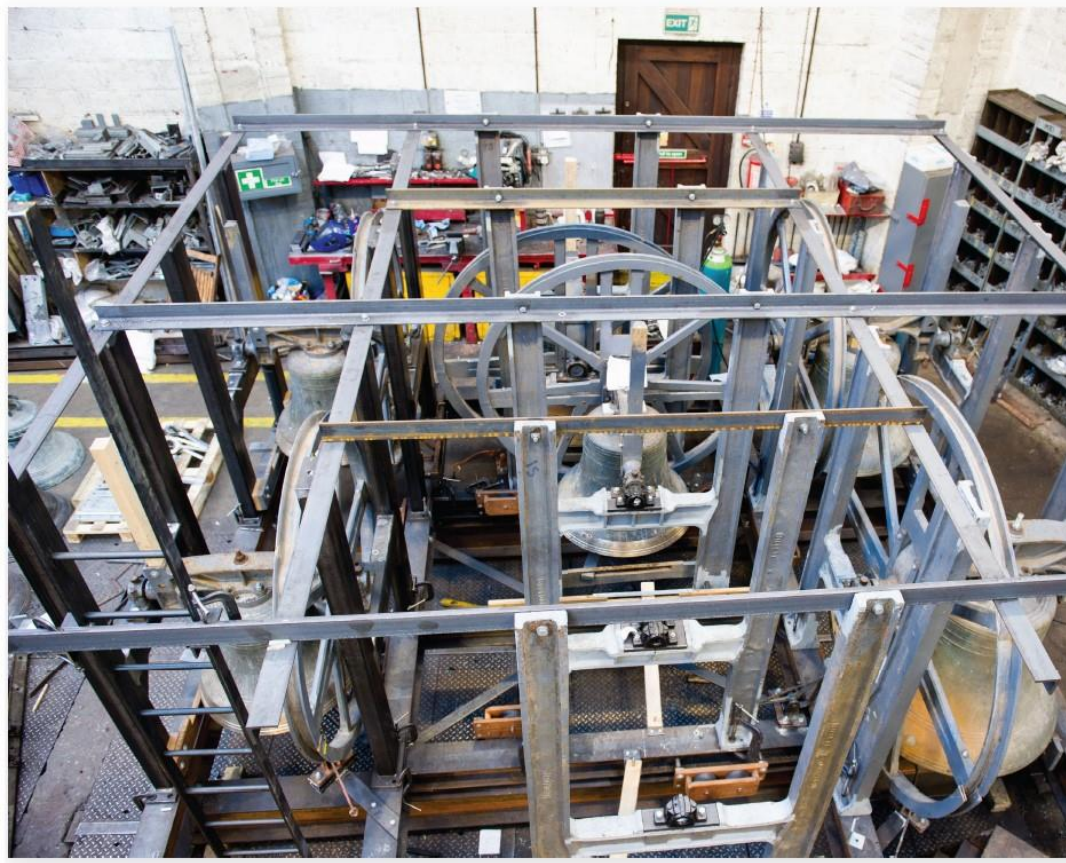




TOWERS 3

FRAMES AND TOWERS

BELL FRAME TYPES



BELL FRAME TYPES

Modern All Steel Frame
(From Taylors of Loughborough)

Check the condition of paintwork
on steel and cast iron components

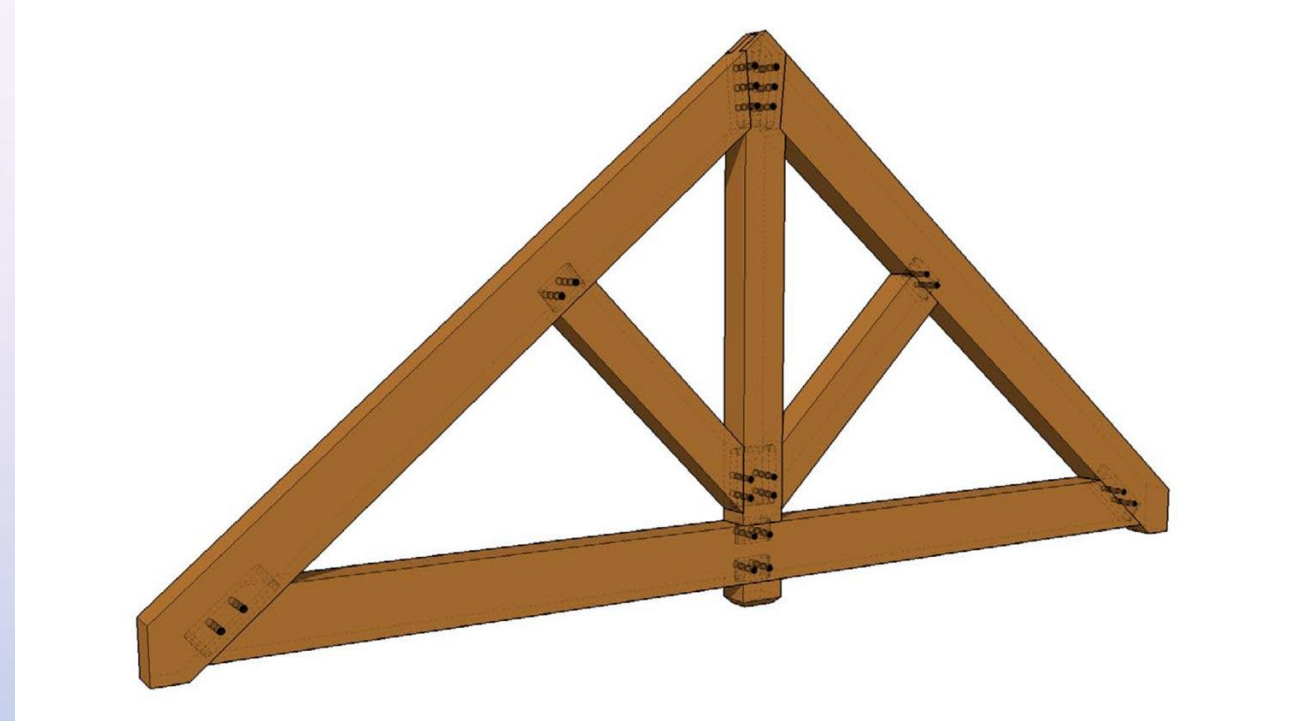


TIMBER FRAMES

Timber Frames

Generally in Oak – King Post Trusses with Braces

Historic England / Listed Buildings





Bearing block
Head
Clearance groove
Jack brace
Brace
Sill

Pit width (uncut) (Pit width (cut))

BOLTS – BOLTS – BOLTS - AGAIN

1 Bolts in Timber Frames

Changes in dimension of timber components.

Oak or Elm issues

Angle Plates, Tie Rods, Foundation Bolts

Pegs, Nails, Bolts, Washers.

Early types of Bolt – Forelock or Handmade



2 Bolts in Steel and Cast Iron Frames

Trapped Water and Rust

Lightning Conductor Bonded to Frame



FRAME BEARINGS OR SUPPORTS

Concrete Padstones

Cast in-situ

Masonry Padstones

Lintels

Direct onto Stonework

Cracks in Masonry

Signs of movement or Wear

Cracks under or adjacent to bearings



WEATHER INGRESS & LOUVRES

Note should be taken of any weather ingress.

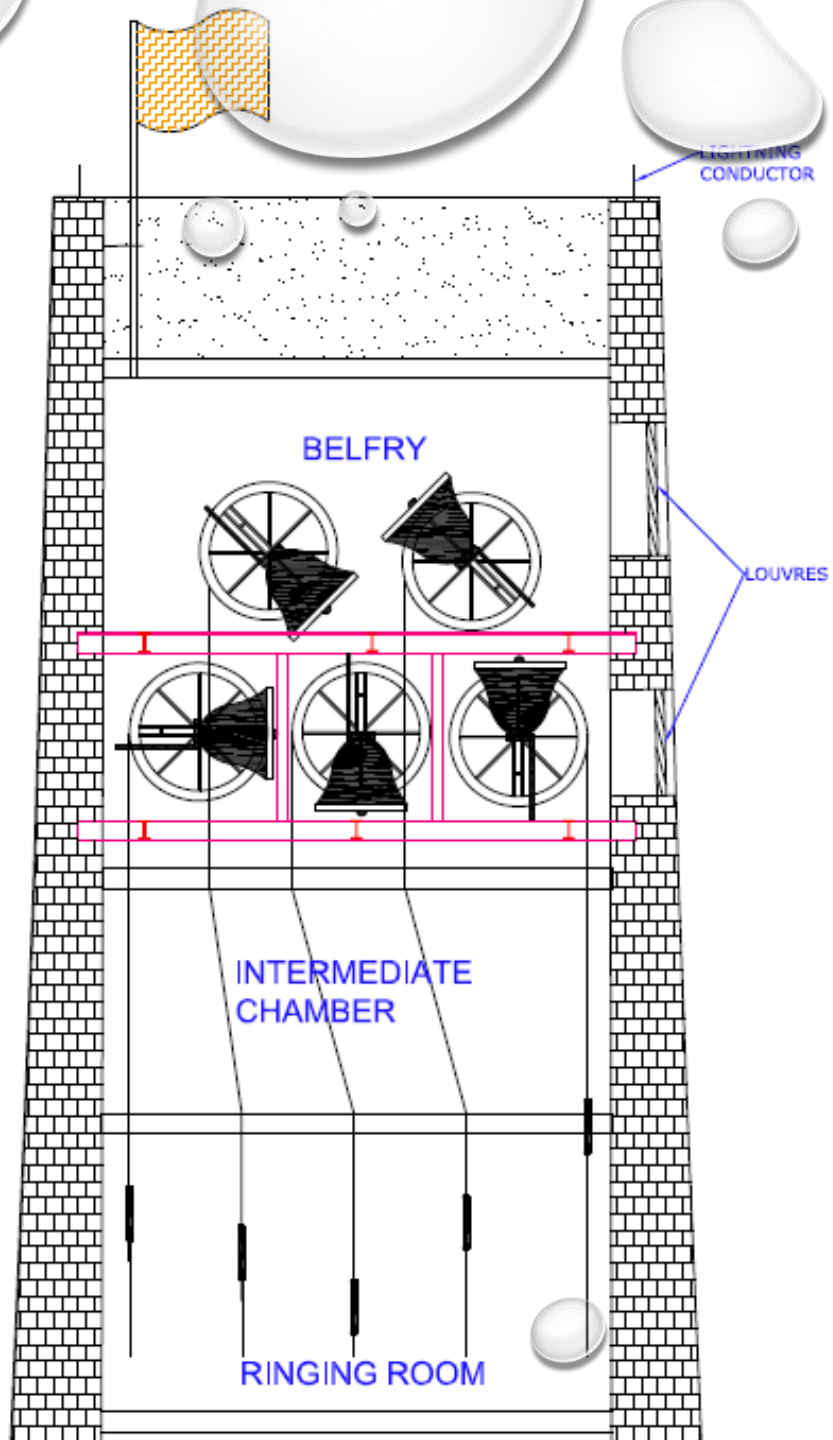
Normally from openings in the tower or spire higher than the bells.

Broken or Missing Louvres

Internal roof and guttering

Birds and Pigeons





THE TOWER ITSELF